

## GRCDSpy.exe

---

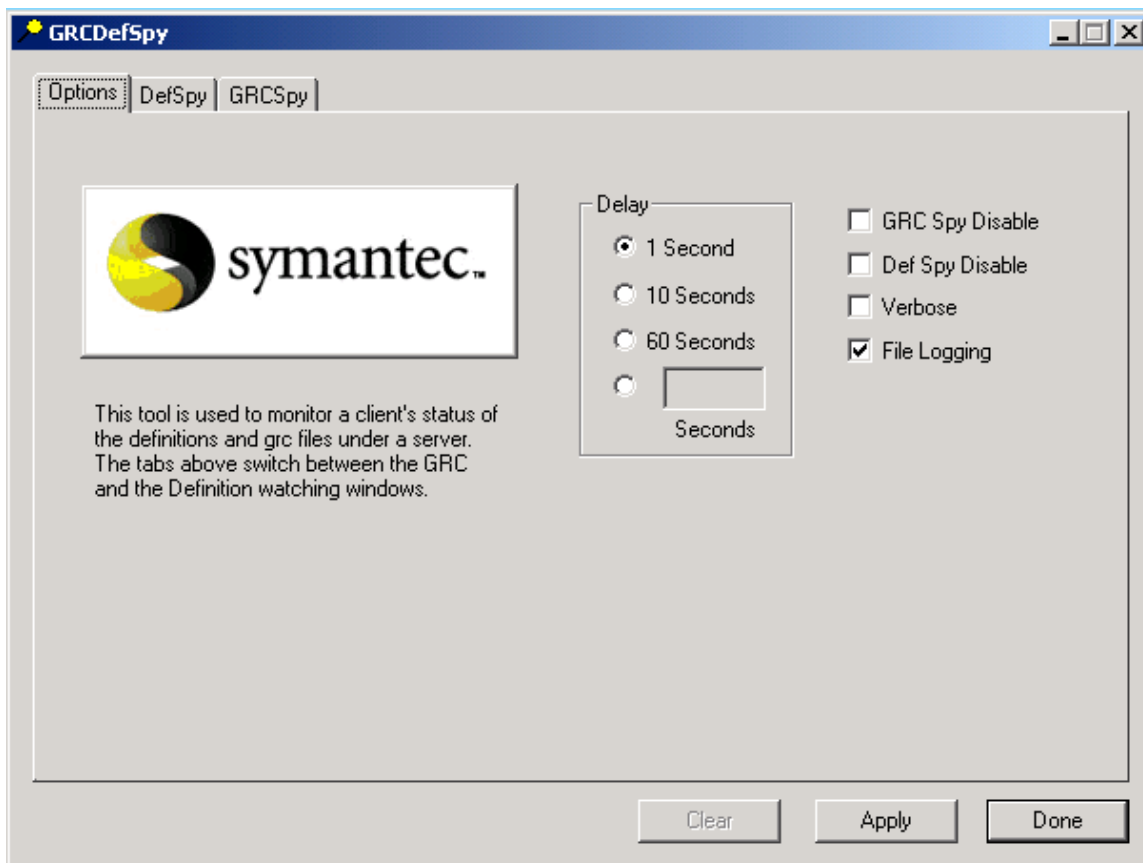
### What the tool is used for:

GRCDSpy (short for GRCDefSpy) is a tool that monitors a client's GRC.dat file and Virus Definition Date information from the server. It does this by enumerating through the server's registry entries to determine which GRC.dat file a client is currently using and which Definitions a client is using.

This tool is useful to indicate if all the clients connected to a server have the target definitions and if they all have the same GRC.dat file (i.e. options have been rolled out). The tool will show the percentage of the clients that have the definitions and GRC.dat files.

### Tool use:

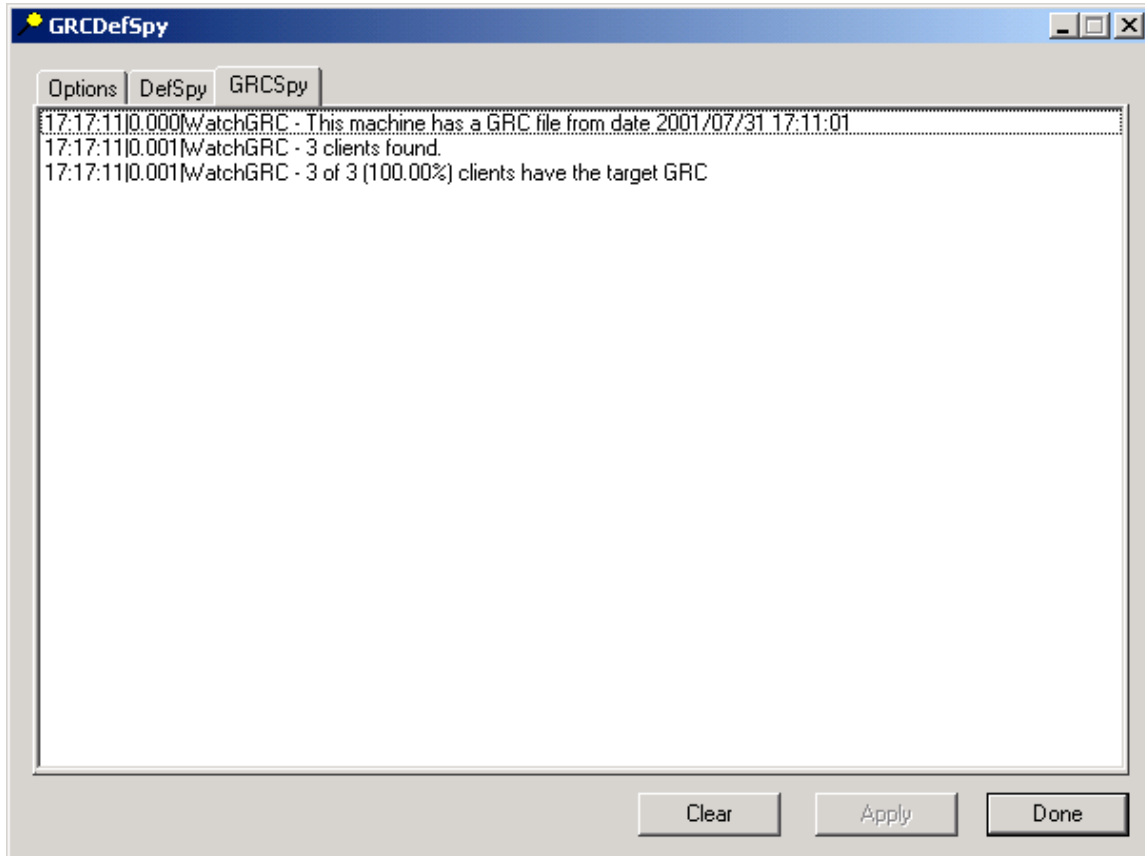
This tool runs on the same machine as the NAVCE server. When this tool is first run the options pane is displayed. On it there are options to enable / disable the GRCSpy and DefSpy options to watch this information from the server registry, verbose mode, and file logging. There is also a timer option that determines the delay at which the tool checks the GRC and definitions of the clients. The apply button must be pressed to make these settings take effect.



## GRCDSPY.exe

---

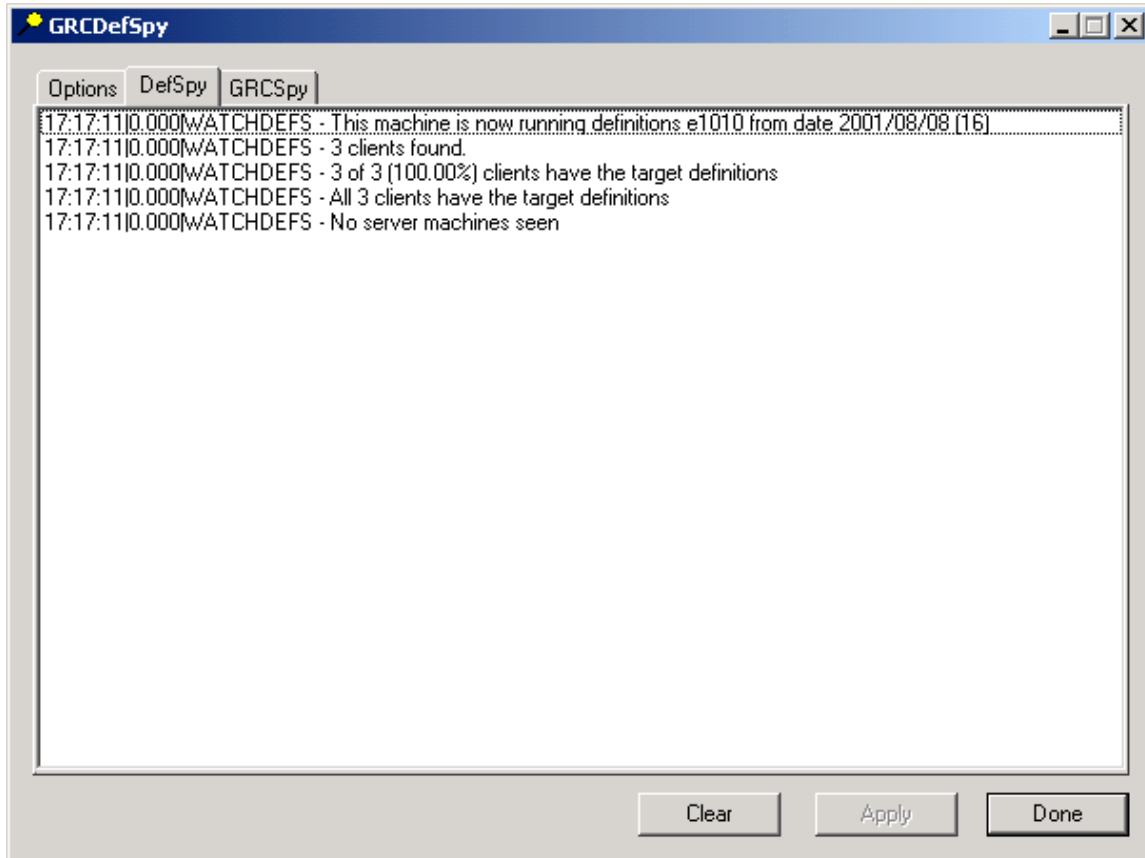
By clicking on the GRCSpy tab you are taken to the GRC pane. This displays the GRC information of the server and its clients. This window can be cleared with the clear button.



## GRCDSpy.exe

---

By clicking on the DefSpy tab you are taken to the Def pane. This displays the Def information of the server and its clients. This window can be cleared with the clear button.



Also, the log files the tool creates are called DefSpy.log and GRCSpy.log. The writing to these logs can be enabled or disabled in the options pane. These files are created in the same directory as the location where the tool was run.